



May 2011

Supervisor Dave Payne
Treasurer Dan Devine
Clerk Jan Roncelli
Bloomfield Township Board of Trustees

The Bloomfield Township Police Department has faced many challenges in the past, but few as daunting as the economic situation in which our country now finds itself. Like the private sector, the Bloomfield Township Police Department has made deep cuts as an organization, and individually down to each officer who is paying more for their health insurance and retirement.

We have, thus far, avoided layoffs by not replacing officers lost through attrition, as well as the generous support of the people of Bloomfield Township who passed a services millage in 2009. Again, the Township government and citizenry have shown extraordinary support for their police. We are grateful, and will continue to provide the excellent service for which we are known.



Kirt R. Bowden,
Chief of Police



Bloomfield Township Police Department 2010 Annual Report

Kirt Bowden, Chief of Police

This Page Intentionally Blank

Township Government

The Charter Township of Bloomfield
4200 Telegraph Road
Bloomfield Hills, MI 48302



Government Style:
Township Board

Township Supervisor:
Mr. David Payne

Elected Administrative Officials and Board of Trustees



Supervisor
Dave Payne



Clerk
Janet Roncelli



Treasurer
Dan Devin



Trustee
Brian Kepes



Trustee
Leo Savoie



Trustee
Neal J. Barnett



Trustee
David B. Buckley

This Page Intentionally Blank

This Page Intentionally Blank

Contents



General Department Information

Administration	1
Department Organization	2
Sworn and Civilian Personnel	3-5
Bloomfield Village P.D.	5
Personnel and Deployment	6-9
Growth Factors	10

Divisions and Special Units

Recognition Awards	11-13
Facilities	14-15
Patrol Division	17-22
K-9 Activity	19
Public Safety Dispatch	20
Court Officer	21
Investigations Division	23-30
Firearm Registration	29
Community Liaison Officer	30

Statistics

Computer Aided Dispatch	32
Group "A" Complaints	33
Group "B" & "C" Complaints	34
All Complaints, Changes	35
Arrests By Complaint Group	36-37
Alarm Activity	38
Police Vehicle Fleet	39
Law Enforcement Information Network	40
Accident and Traffic Enforcement	41-44
Animal Welfare Unit	45
Vehicle Impound Report	46

Police Administration



Chief of Police,
Kirt Bowden



Deputy Chief,
Geof Gaudard



Lieutenant Jeff Phillips,
Administrative Lieutenant



Captain Scott McCanham,
Patrol Captain

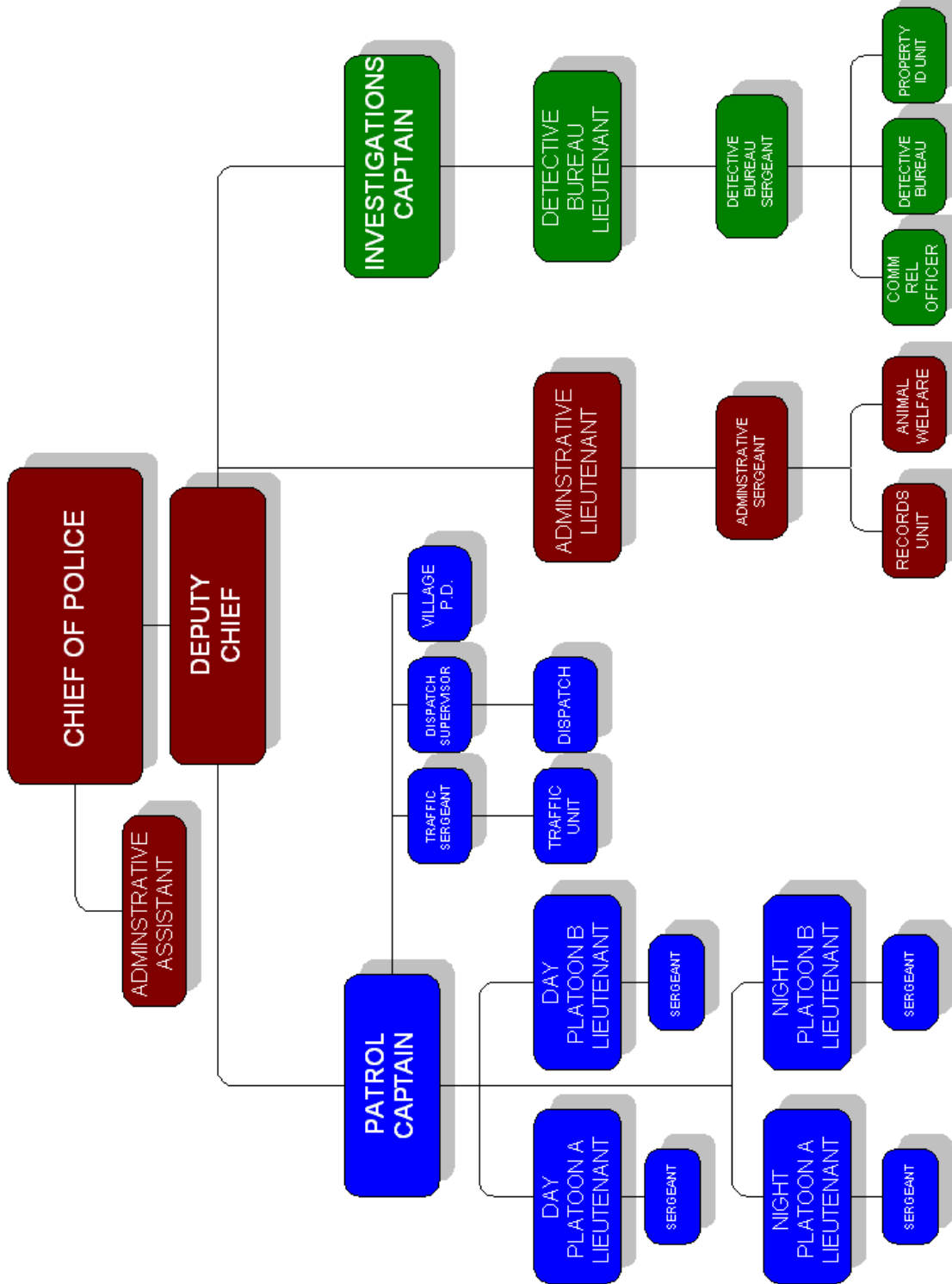
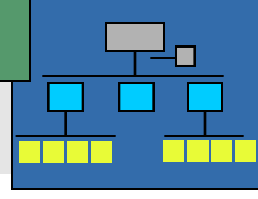


Captain Steve Cook,
Investigations Captain



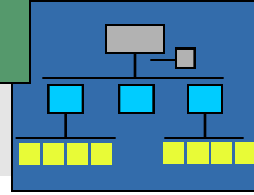
Lori Simonian
Administrative Assistant

Department Organization



Department Organization

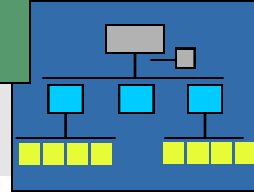
Personnel



Kirt Bowden	Chief	Administration
Geof Gaudard	Deputy Chief	Administration
Scott McCanham	Captain	Administration– Patrol Division
Stephen Cook	Captain	Administration– Investigations Division
Jeffrey Phillips	Lieutenant	Administration, B,L
Rob Garofalo	Lieutenant	Patrol Division, B,L
Phil Langmeyer	Lieutenant	Patrol Division, B,L
Dan Edwards	Lieutenant	Patrol Division, B,L
Mark Paquin	Lieutenant	Patrol Division, B,L
Paul Schwab	Lieutenant	Investigations, B,F,L
Craig Shackelford	Sergeant	Patrol Division, B,L
Kurt Dudek	Sergeant	Patrol Division, B,L
Kent Tschudin	Sergeant	Patrol Division, B,F,I,L
Kimberly Comerford	Sergeant	Operations, B,L
Timothy Abbo	Sergeant	Patrol Division, B,L
Jeffrey Nolan	Sergeant	Patrol Division, B,L,F,R, I
Mark Harshberger	Sergeant	Patrol Division, B,L,I,F
Todd Krumm	Investigator	Investigations, B,L
Dwayne Barker	Investigator	Investigations, B,L
John Hoffman	Investigator	Investigations, B,L, School Liaison
Mark Davis	Investigator	Investigations, B,L
Melinda Hess	Investigator	Investigations, B,L
John Huizdos, Jr.	Investigator	Investigations, B,L,T
Scott Hess	Patrol Officer	Patrol Division, B,I,L
Steven Currie	Patrol Officer	Patrol Division, B,L,Y
<i>Gary Davis</i>	<i>Patrol Officer</i>	<i>Death in the Line of Duty 5/13/04</i>
Sean Kelley	Patrol Officer	Patrol Division, B,L,I,F
Jermaine Bolden	Patrol Officer	Patrol Division, B,F,L,
Cory Donberger	Patrol Officer	Patrol Division, B,L,
Jon Schlabach	Patrol Officer	Patrol Division, B,L,I
Peter Matejcik	Patrol Officer	Patrol Division, B,L,R,CLO, Y

A– Accident Reconstructionist B– Alcohol Breath Test Operator CLO—Community Liaison Officer D-Dispatcher
 F—Field Training Officer I- Identification Technician K-9– Canine Officer L-Certified L.E.I.N. Operator M-Motorcycle
 P– Impound Officer R-Range Officer (Firearms Training) T–Traffic Services Y– Bicycle Officer

Department Organization



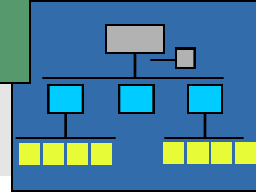
Personnel

James Moschel	Patrol Officer	Patrol Division, B,L,F,Y
Matthew Hill	Patrol Officer	Patrol Division, B,L,M,T,A
Scott Monkkonen	Patrol Officer	Patrol Division, B,L,M,T,D
John Weise	Patrol Officer	Patrol Division, B,L,F,Y,D
April Switala	Patrol Officer	Patrol Division, B,L,F,D
Jason Kollman	Patrol Officer	Patrol Division, K-9, B,L
Kelly Marthen	Patrol Officer	Patrol Division, B,L,F,M,T,I,Y,P
Andrew Ball	Patrol Officer	Patrol Division, B,L,R
Christopher Wegienka	Patrol Officer	Patrol Division, B,L,F
James Gallagher	Patrol Officer	Patrol Division, B,L,F
Bryan Pizzuti	Patrol Officer	Patrol Division, B,L
Christopher Vargo	Patrol Officer	Patrol Division, B,L,M,R
James Shoemaker	Patrol Officer	Patrol Division, B,L,F,I
Daniel Brown	Patrol Officer	Patrol Division, B,L,R,I
Aaron Sparks	Patrol Officer	Patrol Division, B,L,Y
Jennifer Overby	Patrol Officer	Patrol Division, B,L,D, Court Officer
Ryan Smith	Patrol Officer	Patrol Division, B,L,F,D
Joseph Borro	Patrol Officer	Patrol Division, B,L,Y
David Comerford	Patrol Officer	Patrol Division, B,L
Roger Wechter	Patrol Officer	Patrol Division, B,L,R
Nathan Eller	Patrol Officer	Patrol Division, B,L,I,D
Jason Murphy	Patrol Officer	Patrol Division, B,L,I,R
David VanKerckhove	Patrol Officer	Patrol Division, B,L
Angela Carlson	Patrol Officer	Patrol Division, K-9,B,L,D
Anthony Woycehoski	Patrol Officer	Patrol Division, B,L,R
Michael Buczek	Patrol Officer	Patrol Division, B,L,I
Joseph Monti	Patrol Officer	Patrol Division, B,L
Brian Kaschyk	Patrol Officer	Patrol Division, B,L,Y
Andrew Racine	Patrol Officer	Patrol Division, B,L, School Liaison
Eric Pernie	Patrol Officer	Patrol Division, B,L
Jason Follman	Patrol Officer	Patrol Division, B,L,R
Timothy Newsome	Patrol Officer	Patrol Division, B,L
Steven Sherwood	Patrol Officer	Patrol Division, B,L
Kelly McGraw	Patrol Officer	Patrol Division, B,L
Mitchell Holloway	Patrol Officer	Patrol Division, B,L, (Resigned 9/6/2010)
Marisa Miller	Patrol Officer	Patrol Division, B,L
Thomas Smyly	Patrol Officer	Patrol Division, B,L
Edward Ryan	Patrol Officer	Patrol Division, B,L

A— Accident Reconstructionist B— Alcohol Breath Test Operator CLO—Community Liaison Officer D-Dispatcher
 F—Field Training Officer I- Identification Technician K-9— Canine Officer L-Certified L.E.I.N. Operator M-Motorcycle
 P— Impound Officer R-Range Officer (Firearms Training) T—Traffic Services Y— Bicycle Officer

Department Organization

Personnel



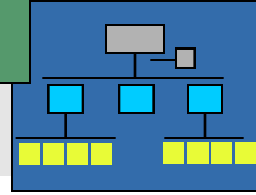
Tracy Lippincott	Records Clerk, Investigations Division
Nina Houghton	Records Clerk
Shawn Gardner	Records Clerk, Property Clerk
Lori Simonian	Administrative Assistant
Alan Ruprecht	Investigations, Identification Technician
Rick Metcalf	Animal Welfare Officer
Laura Joyce	Animal Welfare Officer
Lorry Harbaugh	Animal Welfare Clerk
Mary Kay Barnes	Radio Dispatcher, TAC, CT, Dispatch Supervisor
Margorie Runyon	Radio Dispatcher
Kimberly Valenti	Radio Dispatcher, CT
Alice Stoddard	Radio Dispatcher
Terri Nordquist	Radio Dispatcher
Kathleen Reynolds	Radio Dispatcher, CT
Margaret Fouss	Radio Dispatcher, CT
Kristy Sung	Radio Dispatcher
Stacy Prachar	Radio Dispatcher, CT
Rosemary Murdock	Radio Dispatcher, CT
James Crowe	Radio Dispatcher
Michelle Hesse	Radio Dispatcher
April Greer	Radio Dispatcher
Ernesto Akopian	Custodian
TAC – Terminal Agency Coordinator	CT – Communications Trainer

BLOOMFIELD VILLAGE POLICE

Thomas Patch	Sergeant
Michael McBride	Patrol Officer
James Bramble	Patrol Officer
Dennis Wetzel	Patrol Officer
Roger Hurd	Patrol Officer



Department Organization



ADMINISTRATION

- 1 Chief of Police
- 1 Deputy Chief of Police
- 2 Captains
- 1 Sergeant (Patrol Operations)
- 1 Administrative Lieutenant
- 1 Administrative Assistant
- 6 Sworn Officers**
- 1 **Civilian Employee**
- 7 Total Administration Offices**

PATROL DIVISION

- 4 Lieutenants (Patrol Shifts)
- 5 Sergeants
- 39 Patrol Officers
- 13 Civilian Dispatchers
- 2 Animal Control Officers
- 1 Animal Welfare Clerk
- 48 Sworn Officers**
- 16 **Civilian Personnel**
- 65 Total Patrol Division**

INVESTIGATIONS DIVISION

- 1 Lieutenant (Detective Section)
- 1 Sergeant (Detective Section)
- 6 Investigators (Detective Section)
- 1 School Liaison Officer
- 1 Community Liaison Officer
- 1 Narcotics Enforcement Team Officer
- 1 Special Investigations Unit
- 1 Multi-Jurisdictional Task Force
- 1 Civilian Identification Technician
- 1 Civilian Records Clerk / Secretary
- 1 Civilian Records Clerks
- 1 Civilian Records / Property Clerk
- 13 Sworn Officers**
- 4 **Civilian Personnel**
- 17 Total Investigations Division**

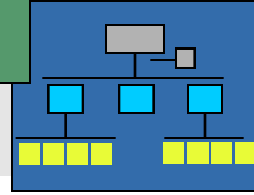
DEPARTMENT STRENGTH

- 67 Total Sworn Officers**
- 21 Total Civilian Personnel**
 - 5 Bloomfield Village Police Officers
 - 1 Part-time Civilian Crossing Guard
- 94 Total Departmental Personnel**

Note: The above numbers reflect the department strength as of 11:59 P.M. on 12/31/10

Department Organization

Patrol Personnel Deployment



Patrol Captain

Day Shift (2 Platoons)

- 2 Lieutenants (Patrol Shift Commanders)
- 2 Sergeants
- 24 Patrol Officers
- 2 Animal Welfare Officers
- 1 Animal Welfare Clerk

Night Shift (2 Platoons)

- 2 Lieutenants (Patrol Shift Commanders)
- 2 Sergeants
- 14 Patrol Officers

Traffic Unit

- 1 Sergeant
- 3 Patrol Officers

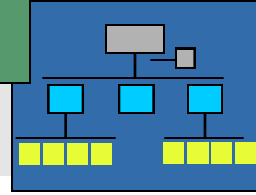
Bloomfield Village Police

- 1 Sergeant
- 4 Patrol Officers

Patrol Division Support

Identification / Evidence Technicians
Dispatch and Communications
Field Training Officer Program
Animal Welfare Officers
Police Bicycle Unit
Firearms Range
Motorcycle Unit
K-9

Department Organization



Investigations Division Deployment

Investigations Captain
Investigations Lieutenant
Investigations Sergeant
Records Clerk—Investigations

Detective Section*
Adult Criminal Investigations
Community Liaison Officer
Crime Stoppers Liaison
Arson Specialist
Narcotic Enforcement Team Officer (N.E.T.)
Special Investigations Unit (S.I.U.)

School Liaison Officers
Sex Crimes / Child Abuse & Neglect
Status Offender Investigations
Youth Criminal Investigations
Juvenile Diversion
Liaison Between BTPD and Bloomfield Hills Schools

Property Section
Property – Evidence and Storage Disposition
Gun Registrations and CCW Permits
Property Auctions



Above, Detectives Todd Krum and Mindy Hess.

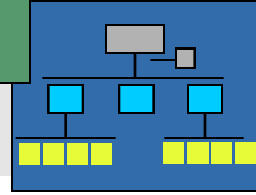


Above, Kirk in the Hills is arguably one of the most distinctive Township landmarks, the cornerstone of which was set in 1951. This photo was taken sometime in the 1950's.

* A given detective may possess a specialty or additional responsibilities, such as arson investigation or sex crimes investigation. Further, a Youth Criminal Investigations detective is equally qualified to investigate adult crimes.

Department Organization

Support Services Deployment



Administrative Lieutenant

Law Enforcement Records Mgt.
Public Safety Answering Point (dispatch)
Digital Fingerprint System
Computer Aided Dispatch
Digital Booking System
Detention Facility
In-Car Videotape
Animal Welfare

Freedom of Information Response
Law Enforcement Statistics
C.L.E.M.I.S. Data Entry
Records Retention
G.I.S. Mapping

Dispatch Section

9-1-1 Emergency Call Center (for Police, Fire and E.M.S.)
Computer Aided Dispatching



Public safety dispatch centers have always been about rapid, efficient communications. Phone calls, radio transmissions, and (what used to be called) 'teletypes', come into and out of the dispatch center many times an hour and, sometimes, many times a minute.

Noisy teletype machines, typewriters, and mechanical printers have been replaced with computer screens and near-silent computer printers. Telephone handsets and radio microphones have been replaced with headsets, making the dispatch center quieter still.



All of the improvements made in dispatch over the decades has been for one purpose: getting police, fire, and EMS assets to where they are needed as quickly as possible.

Township Government



Township Growth Factors

2010:

Department Strength	67 Officers	
Population	42,428*	(1 Officer per 633 population)
Residences (includes multiples)	17,459*	(1 Officer per 261 residences)
Complaints	19,553	(1 Officer per 292 complaints)

2009:

Department Strength	68 Officers	
Population	41,445 *	(1 Officer per 609 population)
Residences (includes multiples)	17,459 *	(1 Officer per 256 residences)
Complaints	19,871	(1 Officer per 292 complaints)

2008:

Department Strength	70 Officers	
Population	41,121 *	(1 Officer per 587 population)
Residences (includes multiples)	17,730 *	(1 Officer per 253 residences)
Complaints	21,170	(1 Officer per 302 complaints)

2007:

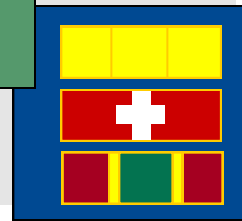
Department Strength	70 Officers	
Population	41,705 *	(1 Officer per 596 population)
Residences (includes multiples)	17,688	(1 Officer per 253 residences)
Complaints	20,994	(1 Officer per 300 complaints)

2006:

Department Strength	69 Officers	
Population	44,523	(1 Officer per 645 population)
Residences (includes multiples)	17,390	(1 Officer per 248 residences)
Complaints	21,265	(1 Officer per 308 complaints)

* Statistics obtained from the Southeast Michigan Council of Governments

Awards



Every year, the department recognizes police officers, civilian employees, and Township residents who perform some service above and beyond what is expected of them. Below are the ribbons as they appear on an officer's uniform and their significance.



The Meritorious Service Medal. Awarded for some difficult task in which crime is prevented, life and property protected, or criminals apprehended. It can also be awarded for assistance in an auxiliary capacity due to technical knowledge, expertise and / or unusual effort put forth.



Chief's Merit Award. Presented for efficient and valuable service to the department, either in carrying out a specific task, or in the performance of general duties over an extended period of time.



Lifesaving Award. Issued to a law enforcement officer who personally saves a life. The lifesaving effort will normally involve, but is not limited to, any of the learned life-supporting processes: Mouth-to-mouth resuscitation, CPR, or the Heimlich maneuver for choking victims.



Department Unit Commendation. This is awarded in recognition of outstanding police services performed by any departmental unit, such as the Field Training Officers unit, Traffic Investigations Unit, etc.



Medal of Bravery. Awarded when a law enforcement officer performs an act in the line of duty knowingly endangering or exposing himself / herself to serious injury, and where because of the nature of the action, a life may be saved, a serious crime prevented, or a person arrested who has committed a serious crime.

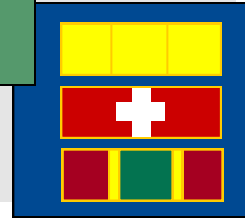


Oak Leaf. This is added to any of the above awards to signify a subsequent award. For example, this is what you would see on the uniform of an officer who has received two Meritorious Service Medals:



Awards

2010 Officer of the Year



DONALD E. ZIMMERMAN OFFICER OF THE YEAR AWARD

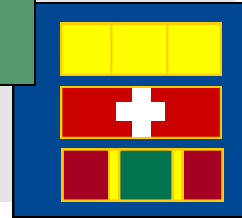


Off. Jason Murphy

His commitment and high level of professionalism consistently contribute to this agency's ability to deliver the finest law enforcement services to the community. His integrity and high moral standards serve as a model to all officers throughout the law enforcement community.

Awards

Lifesaving Award **Off. Eric Pernie**



On July 18, 2010, Officer Pernie responded to the report of a possible drowning of a child at a residence on Shallowbrook Drive. Officer Pernie arrived prior to EMS personnel and observed an unresponsive two year old child being held by her mother. Officer Pernie learned that the child had fallen into a pool and immediately began to assess the child's condition. The child was unresponsive, cold to the touch, and turning blue. Officer Pernie took the child and began steps to expel water that the child had ingested. These steps proved successful and after expelling a large amount of water, the child began to resume normal breathing. Thanks to the officer's quick action, the child made a full recovery and a life was saved. (10-1725)

Honorable Mention **Off. Ryan Smith**

For his professionalism and diligence while investigating a larceny from auto complaint at Best Buy located at 2169 Telegraph. After learning that suspects were cutting catalytic converters off of vehicles in the parking lot, Smith developed suspect descriptions from parking lot surveillance cameras and located a possible suspect vehicle in the area. After a vehicular and foot pursuit of the suspects, Smith was able to apprehend a subject and recover several stolen items in their vehicle. Officer Smith's dedication and perseverance led to the arrest of two individuals and the recovery of stolen property. (10-1372)

Letter of Recognition **Off. Jennifer Overby**

For her professionalism and assistance rendered to a motorist seriously injured in a car versus deer traffic accident. The deer was actually inside the damaged vehicle upon arrival. She took control of the scene, treated the injured driver for shock, and coordinated responding personnel. (10-7619)

Distinguished Citizen **Paul Bhatti**

On July 18, 2010 Mr. Bhatti was visiting friends at a residence on Shallowbrook Dr. The residence has an in-ground pool in the back yard. While walking near the pool, Mr. Bhatti noticed that a small child had fallen into the pool and was floating beneath the surface of the water and unresponsive. Mr. Bhatti immediately jumped into the pool and removed the two year old child. 911 was called and responding personnel were able to assist in getting the child breathing normally. Mr. Bhatti's actions were instrumental in saving the child's life. (10-1725)

Police Station



The Bloomfield Township Police Department is located on southbound Telegraph Road approximately one quarter mile south of Long Lake Road. The police department is situated in the lower level of Township Hall, directly below the Administrative Offices.

The Patrol Division, Investigations Division, Records Section and Property Section are located in this area of the building. In addition to these sections, the dispatch center is located in a centralized portion of the building, along with the detention facilities, booking room and various interview rooms.

In June of 2005, a memorial to the service of Officer Gary Davis was constructed. It consists of a granite bench on the southwest corner of the police station. Officer Davis was killed after his car was struck



by another, the driver of which was subsequently arrested and convicted of driving while under the influence of alcohol. It is a beautiful and fitting tribute to his life and service to the citizens of Bloomfield Township.





Animal Shelter



In addition to the station, the police department also operates a state-certified animal shelter. This state-of-the-art facility is equipped with twelve separate indoor pens for stray dogs, three other indoor pens for police K-9's and enough indoor holding cages to protect approximately ten adult cats. These same facilities can be used to house injured wildlife awaiting more permanent facilities in animal hospitals or wildlife preserves.

In the course of their day, an Animal Welfare Officer may have to help ducks cross a busy multi-lane highway, catch a stray dog, or adopt-out a cat. It has happened in the past that they have also had to help corral a stray horse or cow. Animal Welfare Officers also spend part of their days answering questions from the public concerning pets or wildlife.

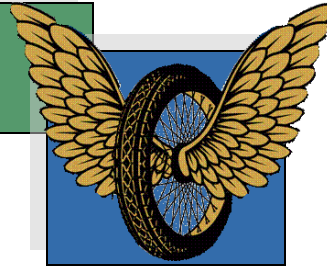


This Page Intentionally Left Blank



Patrol Division

Patrol Division



The Patrol Shifts

The patrol officer is the backbone of every police department. The Bloomfield Township Police Patrol Division includes: uniformed officers, the Traffic Investigation Unit, Radio Dispatchers, Police Bicycle Unit, Motorcycle Unit, Animal Welfare Officers, and the Bloomfield Village Police Department. Uniformed patrol personnel are divided into two shifts and four platoons. The Bloomfield Village Police Department operates exclusively in Bloomfield Village, under the authority of the Bloomfield Township Police Department and is supervised by one sergeant.

Traffic Investigation Unit

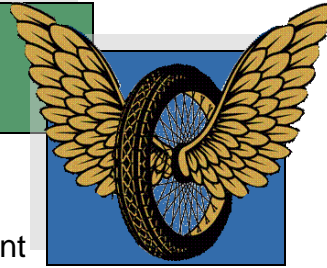
This highly-specialized unit has the two-fold mission of enforcing the traffic laws in Bloomfield Township and investigating all serious injury and fatal car accidents that occur. Within the Traffic Investigation Unit is the Motor Carrier Enforcement program. Two officers of the

Traffic Unit have received additional training in the field of commercial vehicle law and inspection procedures. These Motor Carrier Officers work to ensure the compliance of various trucking companies with the motor vehicle code of the State of Michigan. Officers of the Traffic Investigation Unit are equipped with the latest accident investigation software, GPS, laser measuring equipment, as well as years of experience and training. In 2007, the Traffic Investigations Unit was also charged with the added responsibilities of managing vehicle impounds and abandoned auto auctions.



Do you Facebook? We do! The Bloomfield Township Police Department is using this social media network to keep our residents informed about recent events and even crime mapping.

Patrol Division



K-9 Activity

The Bloomfield Township Police Department continues its forty year tradition of providing the community with the finest in K-9 police services. These services include various utility calls such as building searches, tracking suspects and lost persons, and narcotics calls. The department is doubly fortunate to have two K-9 teams consisting of Officers Carlson and Kollman and their respective partners, Blaez and Rico.

In compliance with the Oakland County Mutual Aid Agreement, the Department's K-9 Unit frequently responds to requests for assistance outside the Township. Below are the local and federal agencies they assisted last year:

2010 Activity	Calls
In Bloomfield Township	
Utility Calls	51
Narcotics Calls	110
Total Township Service Calls	161
Assistance to Other Departments	
Bloomfield Hills Dept. of Public Safety	15
Narcotics Enforcement Team (N.E.T.)	9
Auburn Hills Police Department	4
Troy Police Department	6
Beverly Hills Department of Public Safety	7
Southfield Police Department	3
Royal Oak Police Department	2
Pontiac Police Department	1
Franklin—Bingham Police Department	2
Sylvan Lake Police Department	2
Waterford Police Department	2
Michigan State Police Department	1
White Lake Police Department	2
Birmingham Police Department	6
Novi Police Department	1
Dearborn Police Department	1
Oakland County Sheriff's Office	3
U.S. Drug Enforcement Agency	1
Ferndale Police Department	1
Lathrup Village Police Department	1
Keego Harbor Police Department	1
West Bloomfield Police Department	3
Total K-9 Assists	74
Community K-9 Demonstrations	5
Total K-9 Activity	240



Above, Officer Jason Kollman and his partner, Rico.

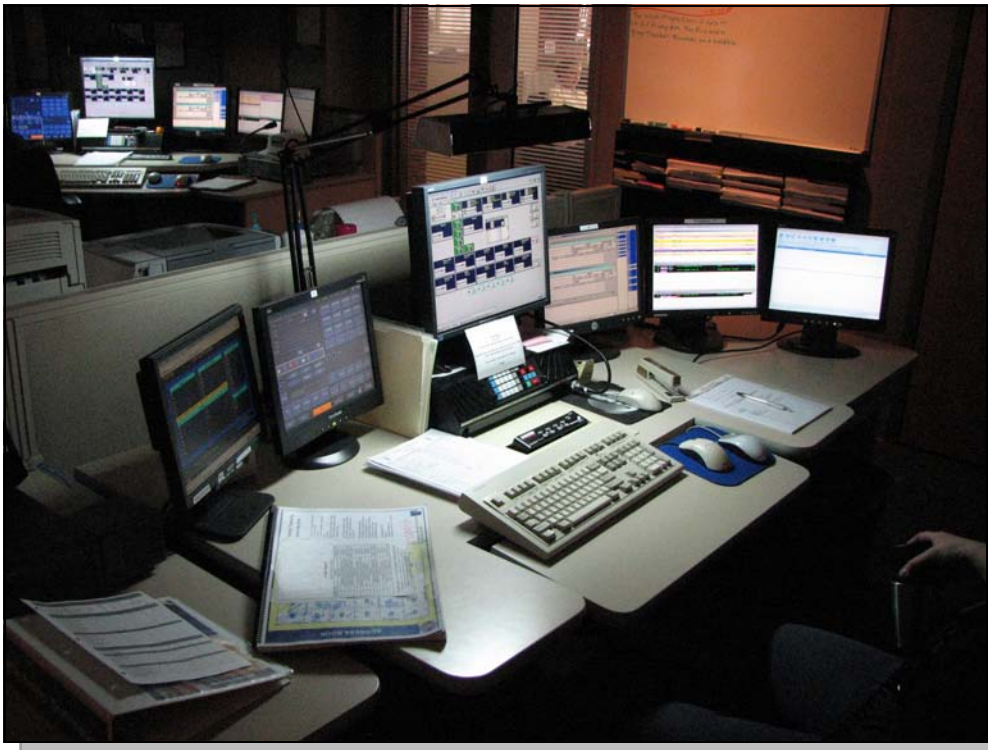
Public Safety Dispatch Center



The nerve center of any public safety agency is its communications or “dispatch” center. Radio dispatchers are typically the first contact a citizen has with any police / fire agency, whether for an emergency or for day-to-day business. The dispatchers of Bloomfield Township work in a state-of-the-art center equipped with three workstations, each connected to Oakland County’s Court’s and Law Enforcement Management Information System (C.L.E.M.I.S.) and Computer Aided Dispatch (C.A.D.) databases, the Law Enforcement Information Network (L.E.I.N.) in Lansing, Michigan, and to the National Crime Information Center (N.C.I.C.) in Washington, D.C.

The department is staffed with thirteen dispatchers who are assigned to the day and night platoons. These dispatchers process calls for service and emergency 911 calls for the police and fire departments of Bloomfield Township and Bloomfield Village.

In order to handle the workload, the dispatch center is staffed around the clock, and depending on the time of the day, with up to four dispatchers, each highly trained in their profession.



The Court Officer



Throughout the week, the police department regularly processes detainees into the court system for arraignment, court appearances and other matters requiring their presence in the courtroom. The agency assigns one patrol officer with the responsibility of transporting in-custody detainees between the court and various detention facilities. This is accomplished using a specially-equipped vehicle that ensures officer and detainee safety. While this uniformed patrol officer works out of the Investigations Office, he / she is assigned to the patrol division and acts as a liaison between the patrol and investigations division in all matters that relate to prisoner transport.



Left, Officer Overby serves as the department's court officer, transporting prisoners between the police station, court, and the Oakland County Jail.

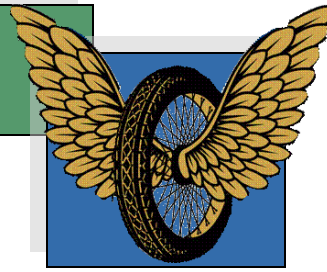


Above, the Franklin Cider Mill in this undated photo, believed to be from the 1920's.

Right, It's now known as the 'Bloomfield Plaza', but in 1954, the southwest corner of Telegraph & Maple Roads was known as the 'Bloomfield Shopping Center'.



Patrol Division



Bloomfield Village Police Dept.



The unique residential community of Bloomfield Village is a part of Bloomfield Township where the residents have chosen to fund one additional property tax mill to support the cost of additional law enforcement presence. Through this arrangement, the Patrol Division of the Bloomfield Township Police Department and the Bloomfield Village Police Department share law enforcement patrol responsibilities in Bloomfield Village. Criminal matters requiring extensive follow up investigations remain under the jurisdiction of Bloomfield Township. The Bloomfield Village Police Department consists of four full-time patrol officers under the field supervision of one patrol sergeant and operates out of its own police and fire facility at 3595 Bradway Boulevard.

K-9 Unit

Serving the community since the mid-1960's, the Bloomfield Township K-9 Unit continues its tradition as the longest standing unit of its kind in Oakland County. In 2009, Officer Angela Carlson joined the long line of K-9 officers that have served this department. Between her and Officer Kollman the residents of Bloomfield Township are afforded police K-9 services almost daily.



Left, December 2010. The Bloomfield Township Police Benevolent Fund presents a check to Cathy Reban for the Christmas Wish program, a charity to provide gifts and necessities for the less-fortunate.



Investigations Division

Investigations Division

2010 Investigations Clearance Report



2010 Case Status

Assigned	Open	Closed
1,389	63	1,440*

Assigned? Open? Closed?

Almost all police reports are generated when someone requests an officer to their home or business. Depending upon the nature of the incident, the officer may start an investigation, writing a report that could be given to a detective for follow-up.

When a detective receives that report, he / she is **assigned** the case. Successful investigation of a case is greatly dependant upon the cooperation of the victim and witnesses, as well as the availability and quality of evidence. These are often referred to as 'solvability' factors.

A case is closed when no more can (or needs) to be done with it. For instance, cases with few solvability factors may be **closed** with no prosecution. On the other hand, a case can be **closed** once the suspect has been identified and a warrant obtained for their arrest.

A detective 'working' a case will keep that case **open** as long as relevant and productive leads are generated, evidence is discovered, and progress is being made.



Tracy Lippincott, the Detective Bureau secretary.



Detectives are frequently called to the scene of a serious crime where they can begin to guide the investigation. Here, Detective Mark Davis, left, and Officer Tim Newsome collaborate at such a scene.

* Note: The number of reports closed may be higher than the number of reports assigned for the same year. This is due to the fact that reports from one year may be subsequently closed in another.

Investigations Division

Youth Complaint Status



Complaint Type	Received	Closed	Open
Homicide (including attempt)	0	0	0
Criminal Sexual Conduct	7	7	0
Robbery / Attempted Robbery	0	0	0
Assault, All Types	8	8	0
Home Invasion	4	4	0
Burglary-Commercial	0	0	0
Larceny- Retail Fraud	22	22	0
Larceny From Vehicle	3	3	0
Larceny - All Others	22	22	0
Auto Theft / Poss. Of Stolen Auto	2	2	0
Auto Theft - Attempts	0	0	0
Arson	0	0	0
Fraud, Checks, Embezzlement	4	4	0
MDOP	34	34	0
Weapons Violation	1	1	0
Drug Offenses	15	15	0
Overdoses	1	1	0
Family / Children	21	21	0
Intimidation / Threats	14	14	0
Liquor Laws / House Party Viol.	24	24	0
OWI / OWIPD	0	0	0
Juvenile Complaints	23	23	0
Runaway / Missing / Lost	5	5	0
Deaths / Suicides & Attempts	6	6	0
Misc. / All Others	39	39	0
TOTAL	135	135	0

* Note: These complaint / crimes are committed by subjects 16 years old or younger, and do not include non-criminal complaints.

Investigations Division

School Liaison Officer Activity



There are two officers in the Bloomfield Township Police Department who specialize in youth crime—the School Liaison Officers. While both are fully sworn police officers, they are trained and experienced in the laws that pertain to juveniles (persons 16 years old and younger), which can differ greatly from those laws that govern adults. Further, while they work almost exclusively in the Bloomfield Hills Schools, they also work in the Birmingham and Avondale school districts. A large part of their day is spent following up on reports written by patrol officers, talking with parents, and visiting the schools for which they are responsible. They have also proven to be an invaluable resource for parents of troubled children.

Cases Handled by School Liaison Officers	2010
Number of Complaints Received*	135
Dispositioned Offenders **	81

Case Disposition, Distribution by Sex***	2010
Male	90
Female	30
Unknown	15
TOTAL	135

* Complaints include civil and other non-criminal matters in which a juvenile is involved and will never be handled as a crime. Also, it is possible that one complaint of a criminal nature may include several suspects.

** “Dispositioned” refers to some action taken against a suspect: referral to a court for prosecution or non-judicial diversion. This number includes recidivists.

*** This is the number of responsible persons, male and female, that were identified and prosecuted or otherwise were diverted to non-judicial channels.

Investigations Division

School Liaison Officer Case Disposition



Disposition of Offenders	2010
Handled Within Department and / or released	17
Referred to Circuit Court	3
Referred to Probate Court	19
Referred to Private / Public Agency	10
Referred to Youth Guidance / Assistance	12
Referred to Bloomfield Township Attorney for Prosecution	20
TOTAL	81
Note: Sum of dispositions will not equal total number of cases due to unsolved crimes or incidents still under investigation.	



Left, founded in 1916, the Oakland Hills Country Club has been one of Bloomfield Township's gems for almost a century. Since its founding, the O.H.C.C. has hosted numerous tournaments, the links being walked upon by some of the greatest golfers in the world. This photo of the clubhouse is believed to have been taken in 1922.

Investigations Division

Property Section



Property and evidence taken into custody by members of this department is received, processed, stored and released by the Administrative Sergeant. The Administrative Sergeant is responsible for the efficient and qualitative processing, maintenance, release, and security of all packaged and tagged property. Property handled by the department can be classified as 'evidence', 'impounded for safekeeping', or 'found'. The Administrative Sergeant, utilizing a property record maintenance program, logs all tagged property into the system, and facilitates its proper storage. Acquired in 1998, this software, developed by Oakland County Data Services, allows for prompt and direct queries of any type of property by such qualifiers as the complaint number, property tag number, date received, reporting officer, officer-in-charge of the case, and property storage location.

Updating and disposing of all tagged property as requested by the reporting officer or the officer-in-charge of a case, the Property Officer prepares property for return to the owner, forfeiture, destruction, or for auction.

Article Type	2008	2009	2010
Articles received	2,005	1,492	1,009



Left, anyone who has lived in Bloomfield Township about 30 years or more, will instantly recognize this intersection. For you 'newcomers', this is Telegraph and Maple Roads looking north. Note the Howard Johnson's on the northwest corner. It is now Hogan's restaurant.

Investigations Division

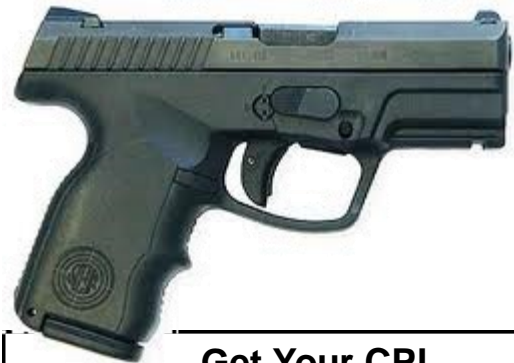
Firearms Registration & CPL Permits



In 1994, the Sheriff's Department divested itself of the duties of issuing handgun purchase permits. Local police departments have now assumed all activities associated with gun purchase permits and gun registrations.

This task was simplified and streamlined in 1998 with the acquisition of the Michigan State Police Automated Pistol Registration System, a direct computer link with Michigan State Police Records Systems in Lansing. The computer program conducts simultaneous functions by allowing an immediate criminal history check of an individual, as well as a record clearance "not stolen" check of the gun.

2010 BY Month	Firearm Purchase Permits	Registrations
January	59	56
February	46	48
March	57	57
April	49	39
May	55	54
June	44	46
July	46	44
August	56	41
September	71	76
October	37	25
November	80	85
December	74	66
TOTALS	674	637



Get Your CPL

The Bloomfield Township Police Department now hosts concealed pistol license training. This one day class is certified by the Michigan Commission on Law Enforcement Standards, and involves 5 hours of classroom and 3 hours of range time. Heavy emphasis is placed on the *legal, safe, and tactical* use of a firearm in self defense. For more information call Ofc. Pete Matejcik at 248-433-7724.

Investigations Division

Community Liaison Office



To better serve the people of Bloomfield Township, the police department established the Community Liaison Office in 2002. Its function is to make the department more 'user friendly', while providing a number of services to the community. Among these are:

- Developing crime prevention strategies for home & business owners
- Conduct home and business security surveys
- Present Internet safety programs to local school students and PTO's
- Meet with neighborhood associations
- Fingerprint children for safety
- Respond to crime statistics queries
- Provide crime prevention input on proposed projects in the Township
- Speak to various civic groups concerning crime prevention and basic police operations

The Community Liaison Officer performs many functions such as conducting home security surveys, giving presentations to civic groups and neighborhood associations, hosting station tours, as well as researching and publishing crime prevention information. Also, through the Community Liaison program hundreds of children have been fingerprinted for safety. To contact the Community Liaison Officer, call : **248-433-7724**



Above, Ofc. Pete Matejck fingerprinting children for safety at the annual Angel's Day Family Fair, **and below**, teaching firearms safety to Boy Scouts

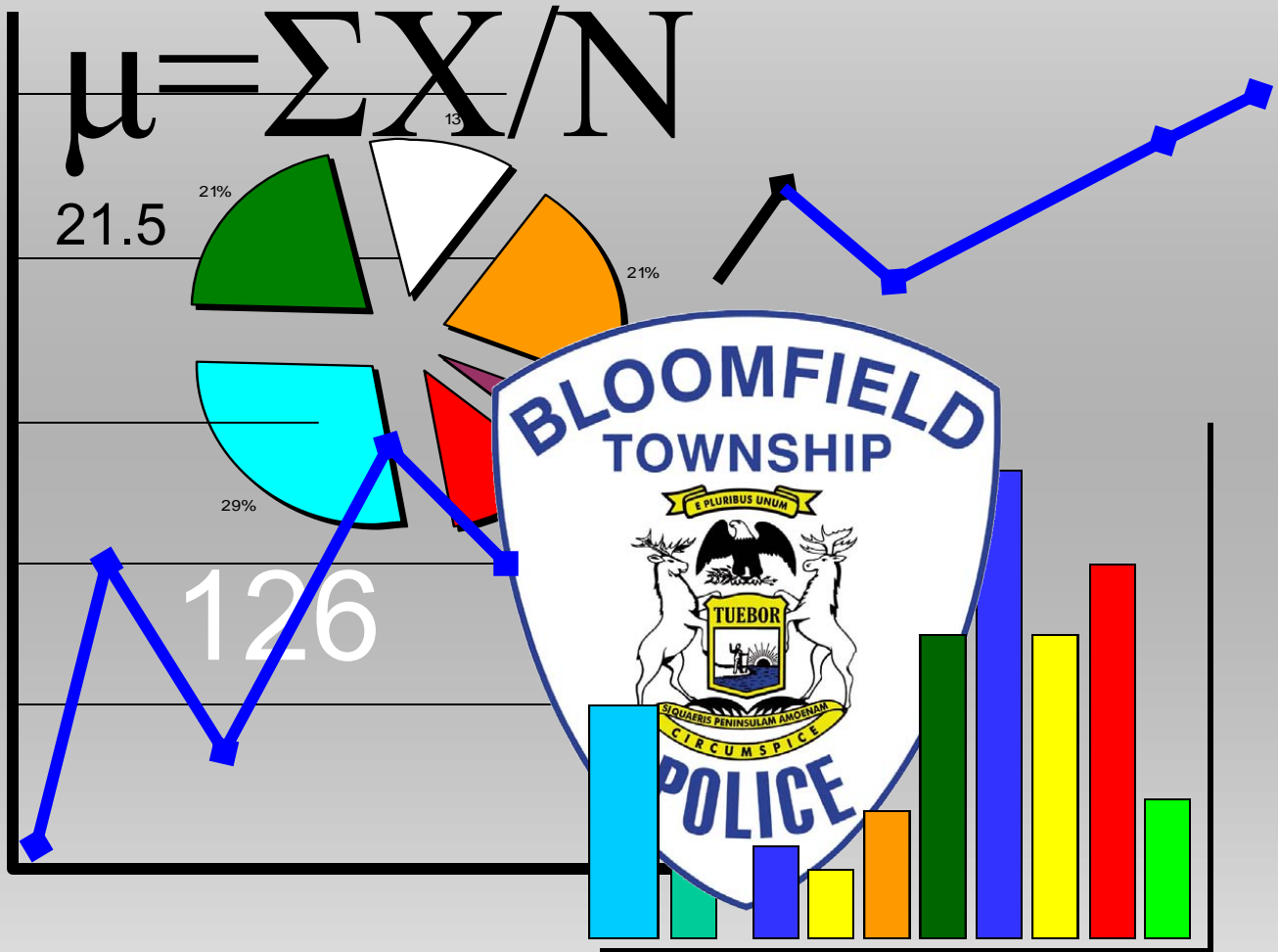


Left, Ofc Matejck talks with some of the youngest Township citizens about being safe and the proper use of the 911 phone system. He also tells a great 'The Boy Who Cried 'Wolf!'' story!



Activity	2009	2010
Home Security Surveys	13	27
Crime Prevention Plan Reviews	54	65
Neighborhood Assoc. Meetings	17	9
Other Civic Group Meetings	41	62
Child Fingerprinting Events	3	3
Total	128	166

2010 Department Statistics



Statistics



Computer Aided Dispatch

The Communications Center is the heart of any police department and radio dispatchers are usually the first contact a citizen has with a police department, whether for an emergency or day-to-day business.

In April 2000, state-of-the-art computer equipment and software were installed in the Communications Center and immediately placed into operation. CAD, using the capabilities of Microsoft Windows®, interfaces several programs, systems and types of computer controlled equipment used by a radio dispatcher. The telephone, including the 911 telephone service, public safety radio communications, word processing and record keeping, data storage and patrol car mobile data computer units are integrated into one system. CAD fully automates police, fire and emergency medical service call-taking and incident-dispatching processes.

Total Dispatches For Police Department

Year	Total Dispatches	% Change From Previous Year
2010	19,553	-1.6%
2009	19,871	-6.5%
2008	21,170	.8%
2007	20,994	-1.2%
2006	21,265	2.6%



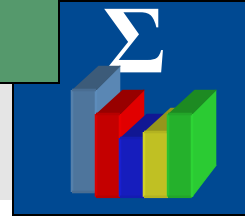
In 2010, the Bloomfield Township Police Department began holding concealed pistol license (CPL) classes for its residents. This class is certified by the Michigan Commission on Law Enforcement Standards, as are the instructors.

The course is geared for both the experienced and new shooter. Shooters may either bring their own handgun for the class, or use one of a number of revolvers.

The CPL class is held periodically, depending upon the demand and costs \$200. If you are interested in taking this class, call Officer Matejcik at 248-433-7724.

Left, the CPL class is 8 hours of classroom and range time, a written exam and a shooting qualification test.

Statistics



Group 'A' Complaints

Group A Complaints	2008	2009	2010
Murder, Homicide	0	0	0
Criminal Sexual Conduct I & III	5	4	5
Criminal Sexual Conduct II & IV	2	1	3
Robbery	11	10	6
Carjacking	0	0	0
Assaults (Incl. Domestic Violence)	150	136	133
Burglary / Home Invasion	124	110	115
Larceny	486	483	384
Motor Vehicle Theft	23	28	19
Arson	1	1	2
Kidnapping / Abduction	0	0	1
Forgery / Counterfeiting	9	5	6
Fraud	214	175	175
Embezzlement / Bribery	24	9	11
Damage to Property (MDOP)	96	92	86
Weapon Violations	11	15	9
Drug Violations	117	155	127
Miscellaneous	7	8	6
TOTAL	1,280	1,232	1,088

* Identity Fraud was removed from this category and placed under Group 'C' Complaints in 2005

** This number includes Identity Theft crimes.

Statistics



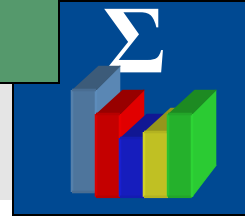
Group 'B' and 'C' Complaints

Group B Complaints	2008	2009	2010
Fraud / Bad Checks	40	40	29
Non-Force Sex Offenses	6	6	7
Family Offenses (non-violent)	8	8	3
OWI / OWIPD	387	368	228
Liquor Law Violations	77	77	81
Obstructing / Escape	39	32	41
Disorderly Conduct	29	38	36
State / Local Offenses	31	19	19
Local, State, & Fed Ordinance Violations	10	9	8
Other Group B Complaints	0	3	2
Runaway Juvenile	4	5	3
Other Juvenile Complaints	0	0	0
Traffic Offenses (Arrestable)	4	1	3
TOTAL	635	606	460

Group C Complaints	2008	2009	2010
Recovered Juvenile - Other Jurisdiction	0	0	1
All Other Juvenile Complaints	152	155	148
Other Arrestable	434	394	438
Warrant Arrests	408	369	322
Property Damage Accidents	1912	1669	1581
Personal Injury Accidents	340	276	284
Fatal Accidents	0	0	3
All Other Vehicle Complaints	1415	1123	1001
Sick / Injury Complaints	471	507	545
All Other Group C Complaints	7070	6645	6774
Animal Complaints	1268	1399	1272
Alarms	4036	3894	4290
TOTAL	17,506	16,431	16,659

* Due to data restructuring with Net RMS, local ordinance violations are not counted

Statistics



All Complaints, Changes

Complaints? A complaint differs from an arrest. How? It can happen that someone calls the police to report that they are the victim of a crime. That is a complaint. If a suspect is subsequently arrested for the crime, it counts toward the arrest totals for the year.

Complaint Group	2010
Group A Complaints	1,088
Group B Complaints	460
Group C Complaints	16,659
Traffic Violations	14,174
TOTAL	32,381

Group A complaints include the most serious crimes, such as murder, sexual assault, robbery, and home invasion, among others. Group B complaints are generally non-violent crimes and less serious property type of crimes. Group C complaints, typically, are non-violent, and either minor criminal offenses, car accidents, animal complaints, or civil infractions.

2010 Property Totals	Value
Value of property stolen	\$1,507,822
Value of property recovered	\$124,934



What we wouldn't give to have one of these for the Woodward Dream Cruise!

Statistics

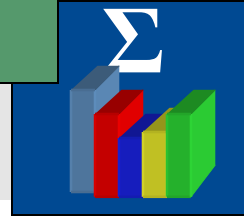


Arrests by Complaint Group

Group A Arrests	2008	2009	2010
Criminal Sexual Conduct	1	0	2
Robbery	5	2	5
Robbery / Carjacking	0	0	0
Assault With Gun	2	1	0
Assault (Incl. Domestic Violence)	30	41	22
Home Invasion	14	15	8
Burglary - Commercial	9	0	0
Purse Snatching	0	1	0
Retail Fraud (Felonies)	6	4	1
Retail Fraud (Misdemeanors)	109	89	68
Larceny From Auto	2	2	7
Larcenies - All Other	22	23	15
Vehicle Theft	3	0	1
Arson	0	0	0
Kidnapping	0	0	0
Forgery	2	0	2
Fraud / Credit Cards	24	27	15
Embezzlement	16	6	6
Possession Stolen Property	5	4	3
Vandalism	2	7	2
Weapons Violations	9	11	6
Drug Violations	99	116	108
All Other Group A	0	0	0
Sub-Total Group A	360	349	271



Statistics



Arrests by Complaint Group

Group B Arrests	2008	2009	2010
Fraud / Bad Checks	12	9	11
All Other Sex Offenses	0	0	1
Family Offenses	1	1	1
OWI / OWIPD	386	350	202
Liquor Law Violations	143	90	112
Obstruction / Flight / Escape	13	10	19
Disorderly Person	4	7	9
Other (Federal/State/Local Off.)	12	7	9
Solicitors	0	2	0
Juvenile Curfew Violations	0	0	0
Traffic Violations	0	1	1
Sub-Total Group B	571	477	365
Group C Arrests	2008	2009	2010
Suspended/Revoked License	260	216	299
All Other Traffic Offenses	50	45	18
Warrant Arrests	309	262	241
All Other Group C Arrests	14	13	10
Sub-Total Group C	633	536	568
Groups A,B,C Arrests	2008	2009	2010
Group A Arrests	360	349	271
Group B Arrests	552	477	365
Group C Arrests	633	536	568
TOTAL	1,545	1362	1,204

Statistics



Alarm Activity, 6 Year Comparison

Every year, the Bloomfield Township Police Department responds to thousands of alarms, both residential and commercial. The vast majority of these are either false alarms (tripped by the homeowner), or weather-related (power outages, lightning, wind, etc.).

Preventing False Alarms

Homeowners can greatly reduce the number of false alarms by thoroughly studying their system's instruction manual and by using the alarm system routinely.

Year	Alarms	Change From Previous Yr.	% Change From Previous Yr
2010	4,290	396	10.17%
2009	3,894	-142	-1.04%
2008	4,036	109	.03%
2007	3,927	217	5.85%
2006	3,710	-172	-4.43%
2005	3,882	-240	-5.8%

What does a home or business owner do to minimize the number of false alarms from their system? Probably the greatest factor would be training - getting to know the alarm system and becoming comfortable with its features. Another aspect is understanding the system itself: knowing what it can and can't do. When an alarm has been installed in your home, the technician should demonstrate all of the features of the system. Don't let the technician leave until you feel completely comfortable with using the alarm. Your alarm system may even come with a DVD that provides additional information.

Once an alarm has been installed, you will be required to register your system with the Township. This takes just a few minutes to do. For more information about registering your alarm system, call 248-433-7776.

Statistics



Police Vehicle Fleet

Modern law enforcement is heavily dependant upon motorized vehicles to accomplish its mission. The most visible of these is the ubiquitous patrol car and motorcycle. But, there are a number of other vehicles you may never notice. Among these are the animal welfare trucks, identification van (mobile crime lab), prisoner transport van, and detectives' cars.

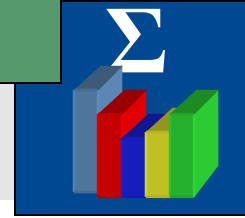
Vehicle Type	# In Fleet
Police Patrol Units	20
Police Motorcycles	2
Animal Welfare Units	2
Identifications Van	1
Village Police Units	2
Unmarked Police Units	16
Other Utility Vehicles	4
Prisoner Transport Van	1
TOTAL	48



Throughout its history, the Bloomfield Township Police Department has seen its vehicles undergo constant evolution as witnessed by these photos.



Statistics



Law Enforcement Information Network (LEIN)

The Michigan Law Enforcement Information Network – LEIN – is a statewide, computerized information system established as a service to Michigan’s law enforcement and criminal justice agencies. Through the use of computer equipment located at Michigan State Police Headquarters in East Lansing, LEIN stores vast amounts of criminal justice information that can be instantly retrieved and furnished to any authorized agency through a LEIN-linked terminal. LEIN provides virtually uninterrupted operation every hour of every day. The goal of LEIN is to maintain a documented computerized filing system of accurate and timely criminal justice information readily available to all law enforcement agencies.

The LEIN data files contain a computerized index of documented criminal justice information concerning crimes and criminals of statewide as well as national interest. LEIN maintains the Wanted Person File and the Vehicle File. The Wanted Person File includes Traffic Warrants, Misdemeanor Warrants, Felony Warrants, Miscellaneous Wanted Persons/Vehicles, Criminal Bench Warrants, Civil Warrants, and Non-Criminal Processes. The Vehicle File includes Stolen Vehicles (all types), Stolen (or lost) License Plates, Impounded Vehicles, Wanted Vehicles, and Abandoned Vehicles or Abandoned Scrap Vehicles.

LEIN is interfaced with various computer systems throughout the state and country enabling users to share invaluable information whenever needed. The National Crime Information Center, NCIC, is the Federal Bureau of Investigation’s national headquarters computer system which provides out-of-state criminal justice information to all local, state and federal agencies. LEIN links all Michigan law enforcement agencies together. NCIC links all states through the Federal Bureau of Investigation.

Type of LEIN Entry (Active)	2007	2008	2009	2010
Wanted Persons	1,688	1,762	1,769	1,857
Vehicles*	41	45	46	36

* Includes stolen automobiles, motorcycles, trailers and snowmobiles.

Statistics



Traffic Accidents, 5 Year Comparison

Police departments engage in a number of activities: patrol, crime prevention, responding to alarms, investigating crimes and arresting the people suspected of committing them, just to name a few. The Bloomfield Township Police Department is also charged with investigating motor vehicle accidents, whether they occur on public roads or private property. Many of these accidents are what could be described as ‘fender benders’, involving no injury. Sadly, there are also many in which people are injured and sometimes killed.

Year	Accidents	Change	% Change
2010	1,868	-77	-4%
2009	1,945	-307	-13.6%
2008	2,252	-134	-.06%
2007	2,386	195	8.9%
2006	2,191	-435	-16.5%



Distracted Driving

Anything that takes your eyes off of the road, hands off of the wheel, or takes your full attention from driving, *it's distracted driving!* Here are some shocking facts from the U.S. Department of Transportation.

- Using a cell phone use while driving, whether it's hand-held or hands-free, delays a driver's reactions as much as having a blood alcohol concentration at the legal limit of .08 percent. (Source: University of Utah)
- Driving while using a cell phone reduces the amount of brain activity associated with driving by 37 percent. (Source: Carnegie Mellon)
- 80 percent of all crashes and 65 percent of near crashes involve some type of distraction. (Source: Virginia Tech 100-car study for NHTSA)
- Nearly 6,000 people died in 2008 in crashes involving a distracted or inattentive driver, and more than half a million were injured. (NHTSA)
- The worst offenders are the youngest and least-experienced drivers: men and women under 20 years of age. (NHTSA)
Drivers who use hand-held devices are four times as likely to get into crashes serious enough to injure themselves. (Source: Insurance Institute for Highway Safety)

Statistics



2010 Traffic Violations

Traffic enforcement is the police activity of monitoring motor vehicle traffic and issuing citations for infractions. A few of these infractions include disregarding traffic control devices, speeding, improper passing, and vehicle equipment violations. Beginning in 2009, the Bloomfield Township Police Department began participating in *E-Ticket*, a program operated by Oakland County's Court Law Enforcement Management Information System (CLEMIS). E-Ticket allows police officers to conduct traffic stops more efficiently and quickly. Further, instead of the traditional handwritten citation used for decades, an E-Ticket is electronically sent to the court and the motorist receives a computer-printed version at the conclusion of the traffic stop.

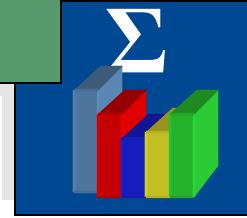
2010 Citations	
Hazardous	7877
Non-Hazardous	3551
Ordinance / Code Violations	51
Animal Welfare Citations	4
All Others	1974
Total Citations	13,457

e-Ticket

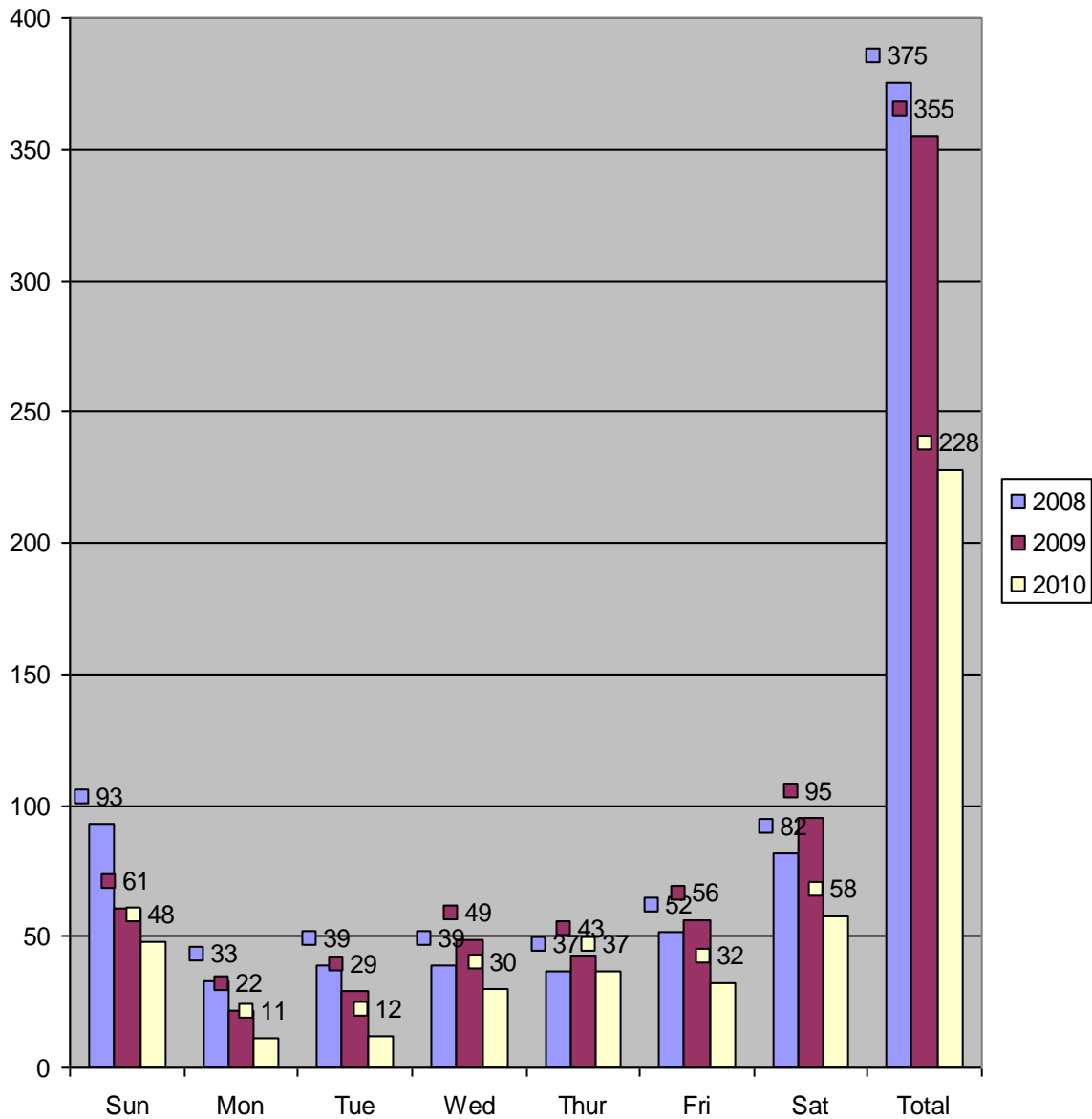


Above, an officer can now swipe a driver's license through the reader in the patrol car. Within a few seconds, the Michigan Secretary of State information pertaining to your license will appear on the screen. If a citation is issued, the printer (above right) creates the driver's copy of the citation. The information pertaining to the traffic violation is transmitted to the 48th District Court.

Statistics



OWI / OWI-PD* Arrests by Day of Week

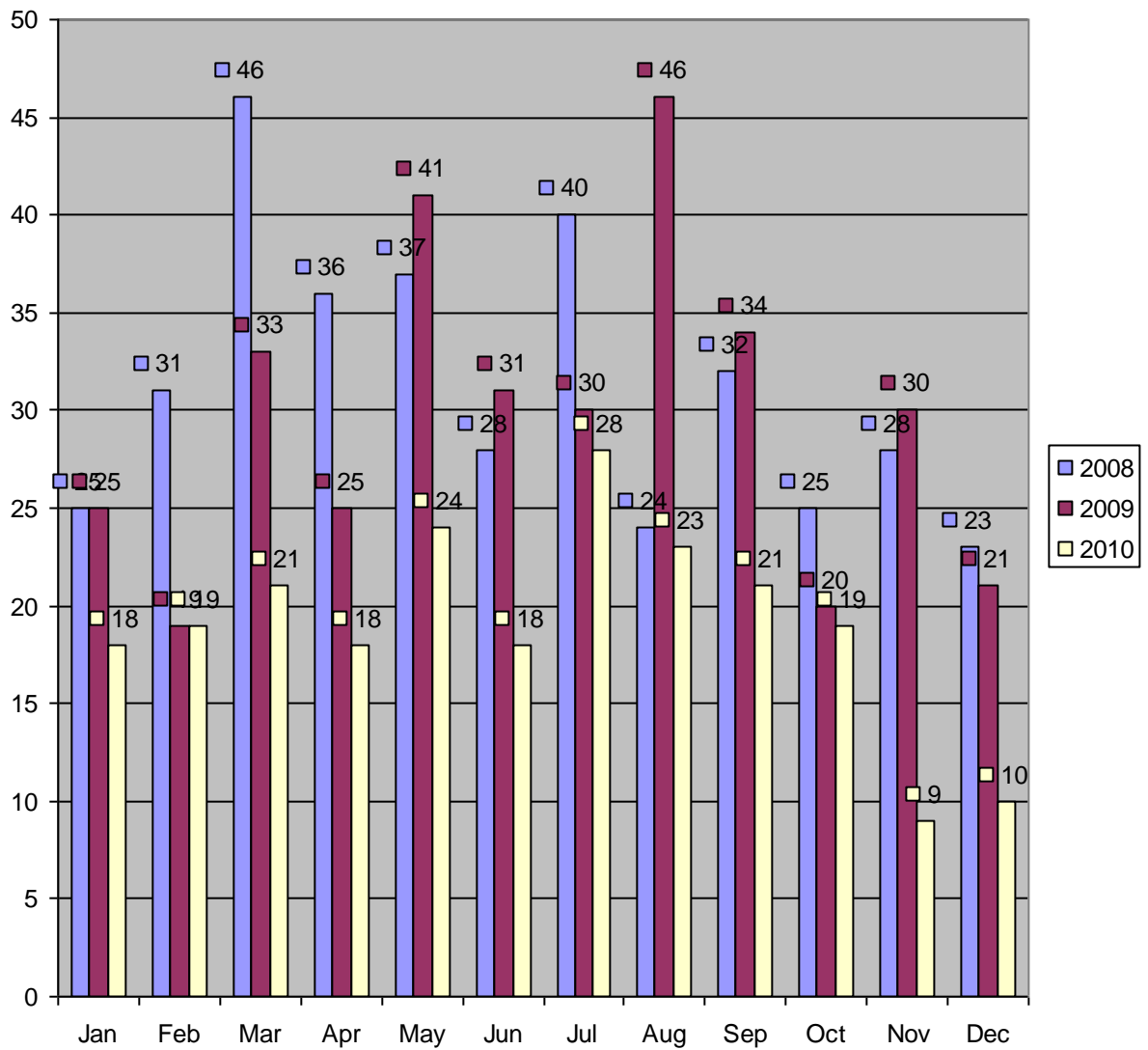


*Operate While Intoxicated / Operate While Intoxicated, Presence of Drugs

Township Government



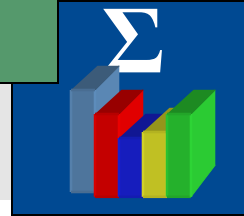
OWI / OWI-PD* Arrests by Month



*Operate While Intoxicated / Operate While Intoxicated, Presence of Drugs

Statistics

Animal Welfare



The Bloomfield Township Animal Welfare Unit is comprised of two Animal Welfare Officers and a civilian clerk. The Officers, patrolling the streets and public areas of Bloomfield Township, respond to animal related calls for service involving domestic animals, livestock, and wildlife. Operating from our state-certified animal shelter, the Animal Welfare Officers typically are catching a stray dog or relocating nuisance wildlife. On occasion, the job responsibility has extended to herding loose cows, playing nursemaid to baby deer, escorting ducklings and goslings across heavy traffic, and rounding up an escaped horse.



Above, Judy Killian (retired) and a fawn in this undated photo.

The 1998 state animal adoption statute, mandating guidelines for pet adoption, has expanded the duties of the Animal Welfare Officers. In cooperation with prospective pet owners and local veterinarians, the animal Welfare Officers assure pet sterilization both as a condition of adoption, and as a means of controlling the pet population in Bloomfield Township.

Officers assure pet sterilization both as a condition of adoption, and as a means of controlling the pet population in Bloomfield Township.



Left, Animal Welfare Officer John Aiken (retired) in this undated photo from the early 1980's.

Activity Type	2008	2009	2010
Animal Complaints	655	769	748
Animal Bites / Scratches	21	17	17
Animal Pick-Up, Live	339	242	246
Live Trap Requests	68	104	80
Animal Adoptions	259	287	111
Animals Returned to Owners	104	113	76
Dead Animal Pick up / Disposal	248	337	233

Statistics



Vehicle Impounds

For a variety of reasons, police departments must tow vehicles throughout the year. Below is the towing activity of the Bloomfield Township Police Department for 2010.

Some of the reasons a car may be towed are arrest, traffic hazard, motorist assist, abandoned, recovery of a stolen car, or illegal parking.



The Bloomfield Township Police Department has two companies perform towing services throughout the year: General Towing and Adams Towing.

Number of Vehicles Impounded		2010
Adams Towing		324
General Towing		521
Other Towing Companies		7
TOTAL		852



Left, an unbelievable accident. This station wagon (remember those?) struck a guardrail broadside, skewering the car, in this photo from the late 70's - early 80's.