



CHARTER TOWNSHIP OF BLOOMFIELD

NOTICE OF PUBLIC HEARING

**Bloomfield Hills School District
Residential Site Plan Proposal
Villas at Bloomfield Grove Planned Unit Development
2800 Lahser Road**

BOARD OF TRUSTEES

NOTICE IS HEREBY GIVEN that the Board of Trustees of the Charter Township of Bloomfield, Oakland County, Michigan will hold a public hearing at the following time and place:

Monday, February 26, 2018
7:00 p.m.
Bloomfield Township Hall
4200 Telegraph Road
Bloomfield Hills, MI 48302

At the public hearing, the Board will consider a site plan proposal for a residential subdivision on the vacant parcel formerly the Hickory Grove School, located on the west side of Lahser Road, north of Hickory Grove Road. Comments regarding this proposal may be provided at the public hearing or by contacting the Planning Division at 248.433.7795

SIDWELL NO: 19-09-276-001 and 19-09-233-001

JAN RONCELLI, TOWNSHIP CLERK

NOTE: The Charter Township of Bloomfield will provide necessary, reasonable auxiliary aids and services at all meetings to individuals with disabilities. All such requests must be made at least five days prior to said meeting. Individuals with disabilities requiring auxiliary aids or services should contact the Bloomfield Township Clerk's Office by writing, emailing or calling the following: Clerk's Office, P. O. Box 489, Bloomfield Hills, MI 48303-0489 - Telephone: 248-433-7702. Email: clerk@bloomfieldtp.org

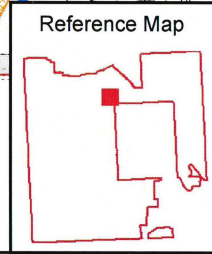
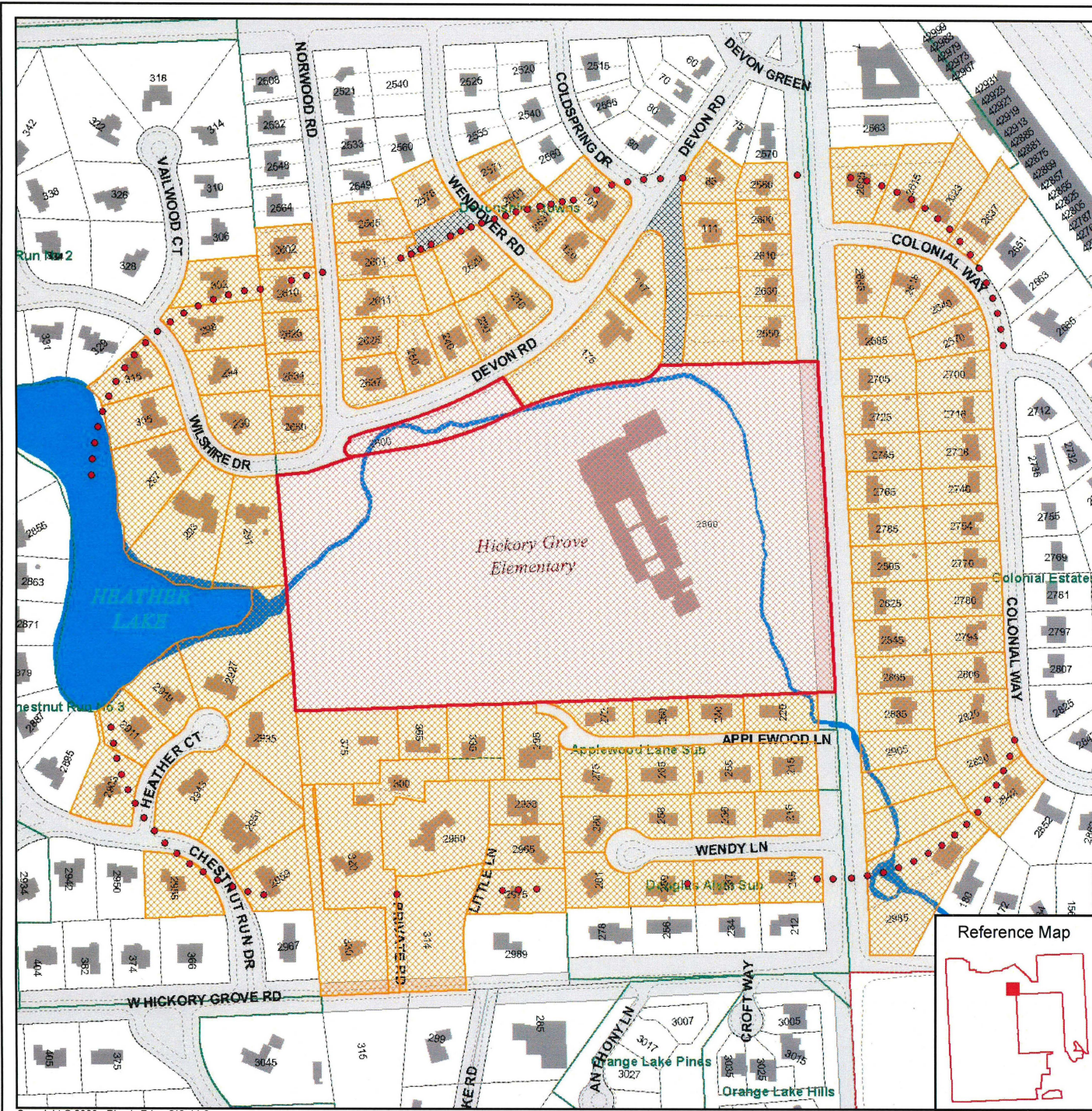
Posted: February 8, 2018



Bloomfield Township CivicSight Map

MAP LEGEND:

- LOT LINES
- MARSH - SWAMP
- ROAD EDGE - PLANIMETRICS - 2000
- TOWNSHIP LIMITS
- SUB DIVISIONS
- RIVERS - STREAMS
- OPEN WATER
- BUILDING OUTLINE
- PONTIAC 425 AGREEMENT
- SIDWELL MAP HOTLINK
- PARCEL LAYER
- NO THROUGH ROADS
- RIGHT-OF-WAY



Map Scale: 1 inch = 400 feet
 Map Date: 2/06/2018
 Data Date: February 6, 2018



Sources: Bloomfield Township, Oakland County GIS Utility, River's Edge GIS, LLC.

Disclaimer:
 The information provided here is intended for reference purposes only. It was compiled from a variety of available sources with varying degrees of accuracy. It is not a legally recorded map or survey and is not intended to be used as one. Bloomfield Township assumes no responsibility for errors that arise from the use of the data.