



**NOTICE OF CONSIDERATION OF
SITE PLAN & SPECIAL LAND USE REQUEST**

**1981 SOUTH TELEGRAPH ROAD
(SIDWELL NO: 19-05-159-026)**

PLEASE TAKE NOTICE THAT a PUBLIC HEARING will be held by the Board of Trustees of the Charter Township of Bloomfield, Oakland County, Michigan on **Monday, November 14, 2022 at 7:00 p.m.** in the Bloomfield Township Hall Auditorium, 4200 Telegraph Road, Bloomfield Hills, MI 48302.

At the hearing, the Board will consider a site plan and special land use request for extended business hours at Wing Stop, 1981 South Telegraph Road.



Comments regarding this proposal may be provided at the public hearing, submitted via email to publiccomment@bloomfieldtp.org or by contacting the Planning Division at (248) 433-7795.

NOTE: The Charter Township of Bloomfield will provide necessary, reasonable auxiliary aids and services at all meetings to individuals with disabilities. All such requests must be made at least five days prior to said meeting. Individuals with disabilities requiring auxiliary aids or services should contact Bloomfield Township by writing or calling the following: Letter • Bloomfield Township Clerk's Office, 4200 Telegraph Road, Bloomfield Hills, MI 48302. Email • clerk@bloomfieldtp.org Phone • 248-433-7702.

**MARTIN C. BROOK
BLOOMFIELD TOWNSHIP CLERK**



Bloomfield Township
1981 South Telegraph Road
(38 Labels)

MAP LEGEND:

- 1/4" LOT LINES
- MAPSH - SWAMP
- ROAD EDGE - PLANIMETRICS - 2000
- TOWNSHIP LIMITS
- SUB DIVISIONS
- RIVERS - STREAMS
- OPEN WATER
- BUILDING OUTLINE
- PONTIAC 4.25 AGREEMENT
- PARCEL LAYER
- NO THROUGH ROADS
- RIGHT-OF-WAY



Map Scale: 1 inch = 524 feet

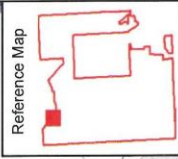
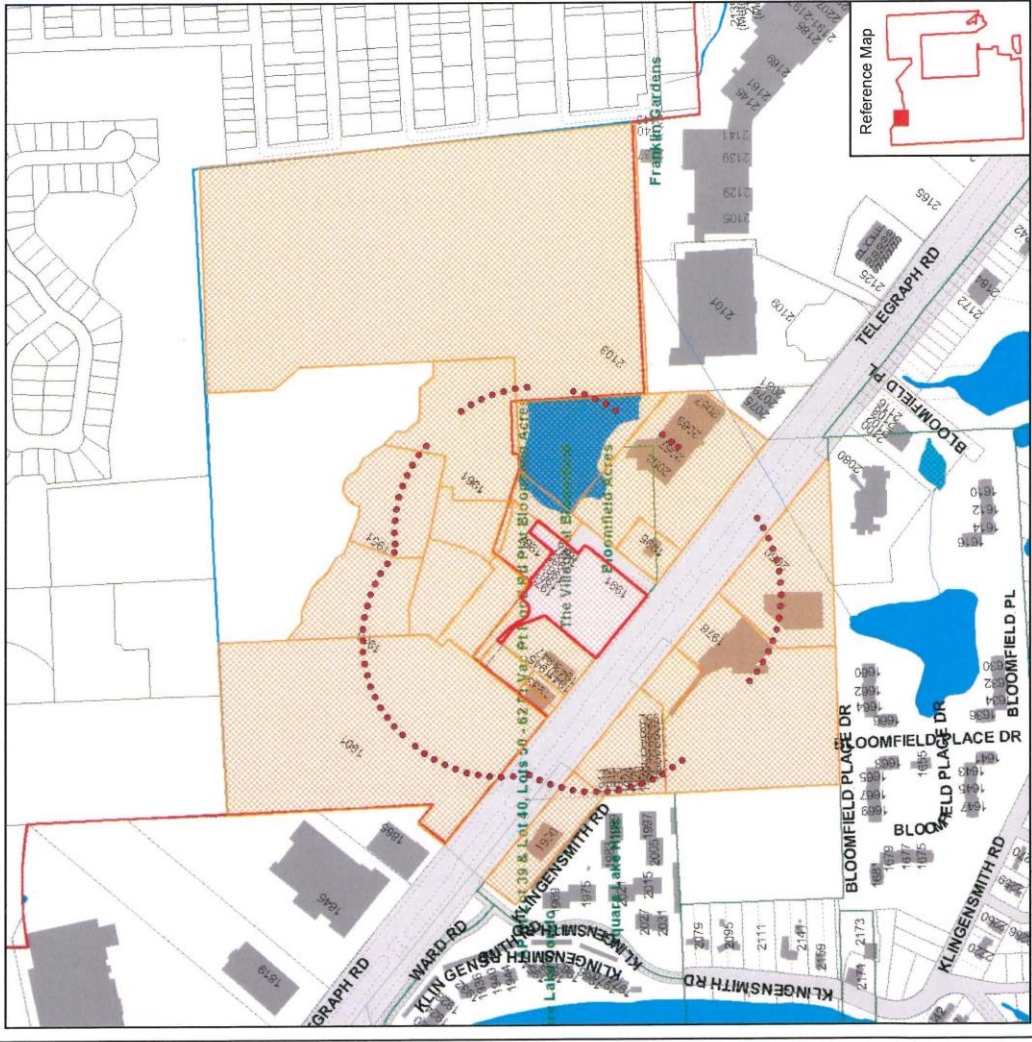
Map Date: 10/25/2022

Data Date: October 12, 2022

Sources: Bloomfield Township, Oakland County GIS Utility, River's Edge GIS, LLC.

Disclaimer:

The information provided here is intended for reference purposes only. It is not a legally recorded map or survey and it is not intended to be used as such. Bloomfield Township assumes no responsibility for errors that arise from the use of this data.



Copyright © 2005 - River's Edge GIS, LLC.