



CHARTER TOWNSHIP OF BLOOMFIELD

NOTICE OF PUBLIC HEARING

**TEL-SQUARE PLAZA / A. JONNA
2510 – 2550 S. TELEGRAPH ROAD**

BOARD OF TRUSTEES

NOTICE IS HEREBY GIVEN that the Board of Trustees of the Charter Township of Bloomfield, Oakland County, Michigan will hold a public hearing at the following time and place:

Tuesday, May 26, 2015
7:00 p.m.
Bloomfield Township Hall
4200 Telegraph Road
Bloomfield Hills, MI 48302

At the public hearing, the Board will consider special land use proposals to allow for retail, personal service and restaurant uses within the Tel-Square Plaza at the southwesterly corner of Telegraph Road and W. Square Lake Road. Comments regarding this proposal may be provided at the public hearing or by contacting the Planning Division at (248) 433-7795.

SIDWELL NO's: 19-08-227-001,-019,-020

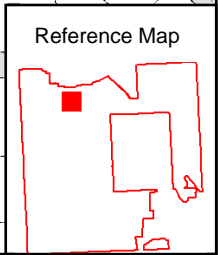
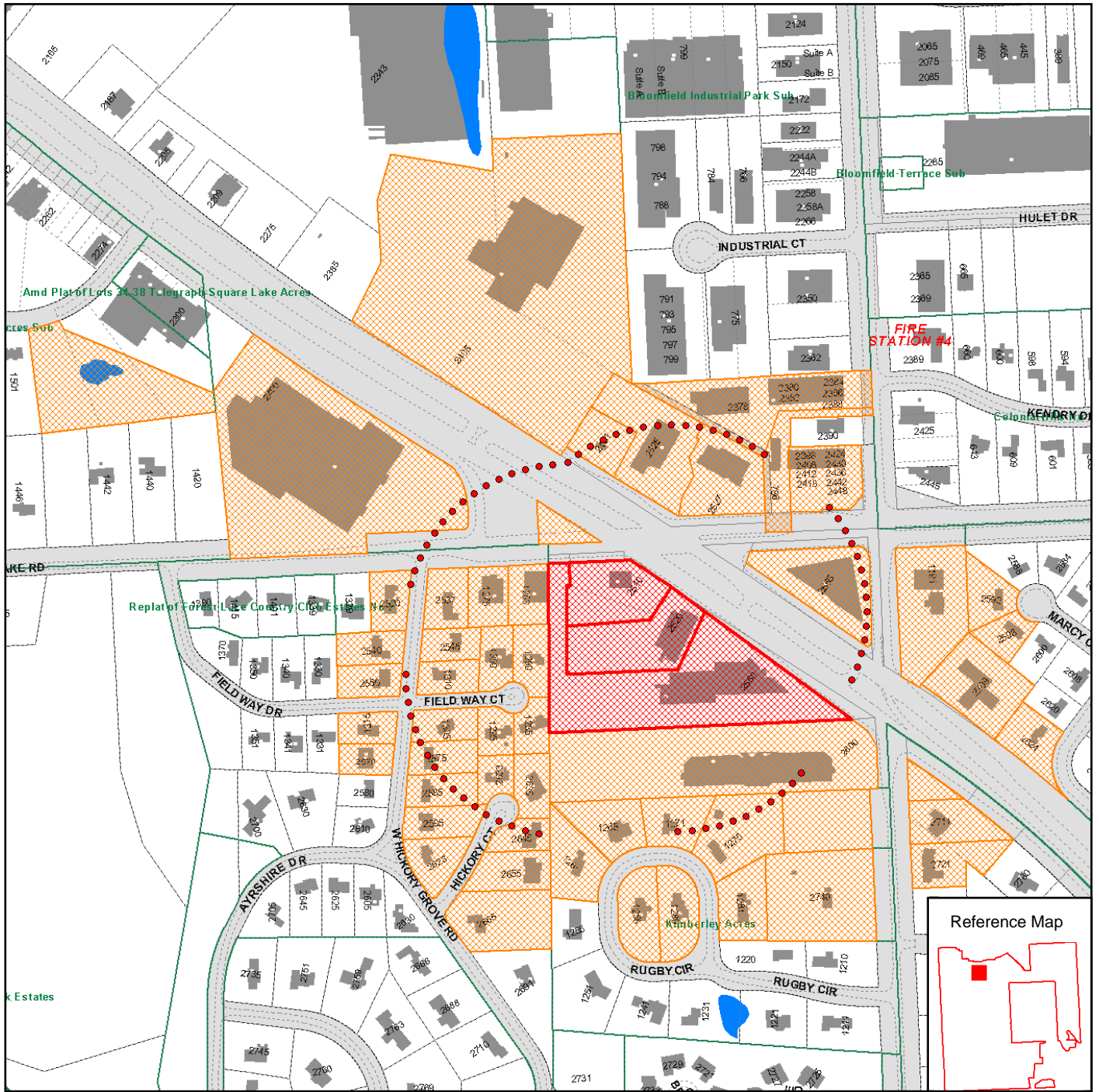
JAN RONCELLI, TOWNSHIP CLERK

NOTE: The Charter Township of Bloomfield will provide necessary, reasonable auxiliary aids and services at all meetings to individuals with disabilities. All such requests must be made at least five days prior to said meeting. Individuals with disabilities requiring auxiliary aids or services should contact the Bloomfield Township Clerk's Office by writing or calling the following: Clerk's Office, P. O. Box 489, Bloomfield Hills, MI 48303-0489 - Telephone: 248-433-7702.

Posted: May 7, 2015



Bloomfield Township - CivicSight Map



MAP LEGEND:

- LOT LINES
- PARCEL IDENTIFICATION
- MARSH - SWAMP
- ROAD EDGE - PLANIMETRICS - 2000
- TOWNSHIP LIMITS
- SUB DIVISIONS
- RIVERS - STREAMS
- OPEN WATER
- BUILDING OUTLINE
- PONTIAC 425 AGREEMENT
- SIDWELL MAP HOTLINK
- PARCEL LAYER
- NO THROUGH ROADS
- RIGHT-OF-WAY

Map Scale: 1 inch = 461 feet

Map Date: 5/06/2015

Data Date: April 22, 2015



Sources: Bloomfield Township, Oakland County GIS Utility, River's Edge GIS, LLC.

Disclaimer:
The information provided here is intended for reference purposes only. It was compiled from a variety of available sources with varying degrees of accuracy. It is not a legally recorded map or survey and is not intended to be used as one. Bloomfield Township assumes no responsibility for errors that arise from the use of the data.