



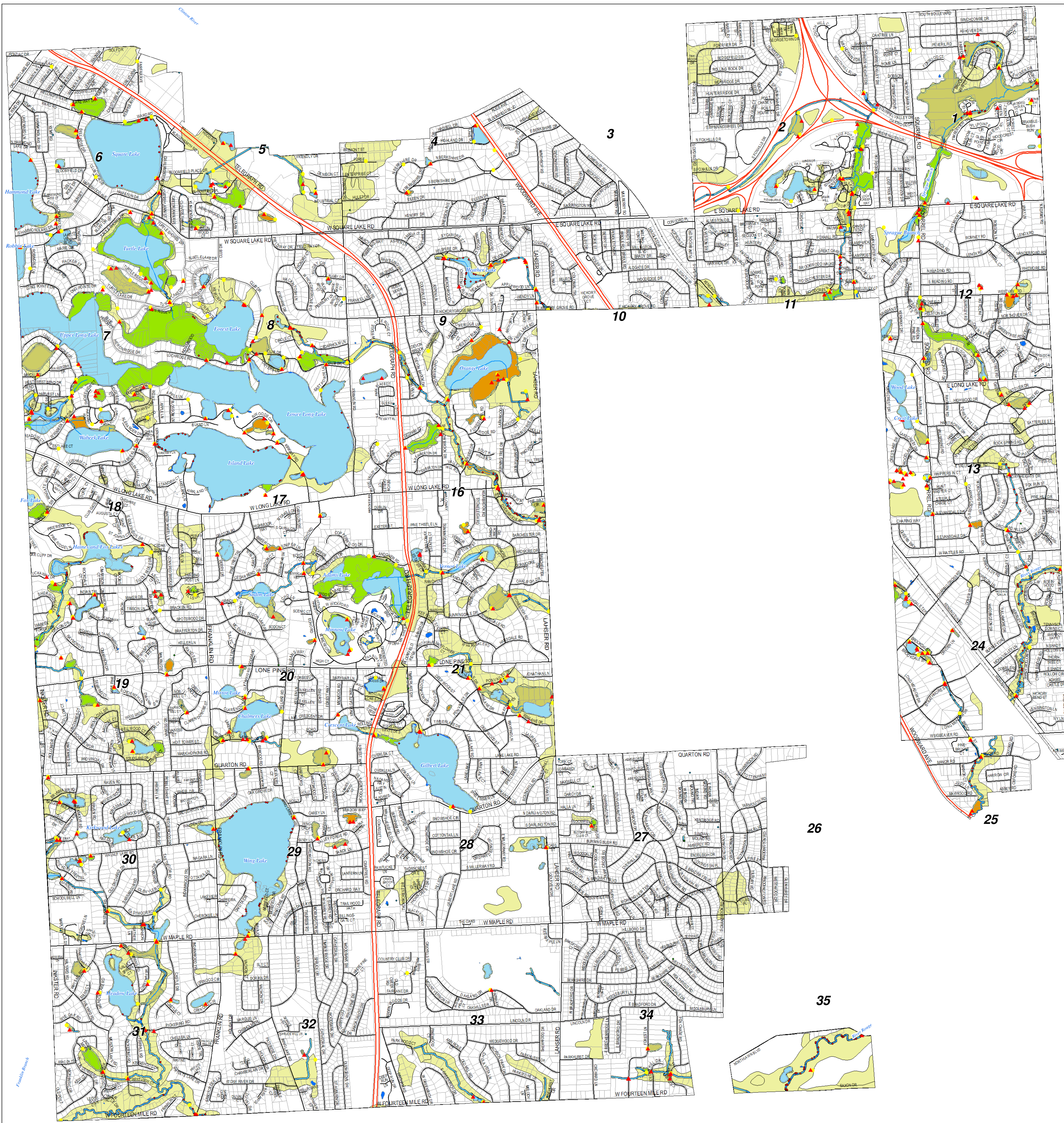
Bloomfield Township Wetland Inventory

Final Map

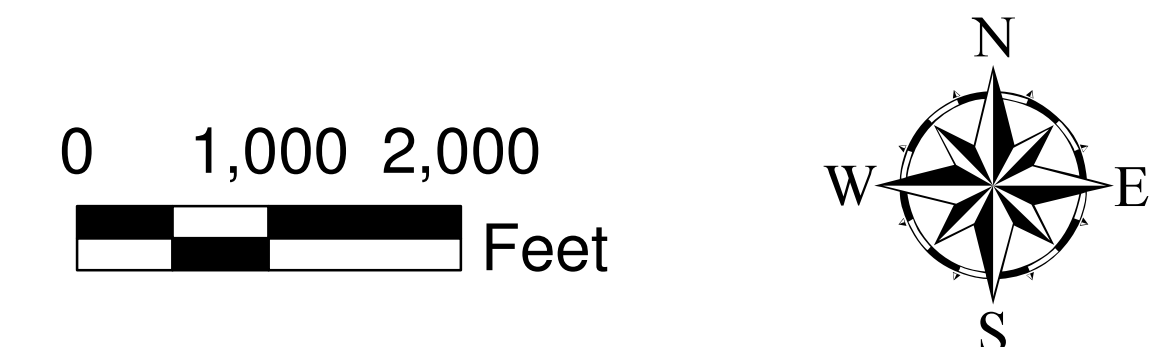
December 2007

Legend

- Photo Location
 - Survey Location
 - Township Outfalls
 - Outfall Locations
 - Detention Basins
 - Township Boundary
 - Parcels
 - Hydric Soils (SSURGO)
 - Natural Features Setback
- ### Wetlands
- Primary Type**
- Emergent (PEM)
 - Scrub-Shrub (PSS)
 - Forested (PFO)
 - Open Water (POWZ)
 - Small Ponds



This map shows the approximate location and existence of wetlands in Bloomfield Township as developed from Base Map data and a field evaluation primarily from public right-of-ways. This map is intended to be used as a tool to assist in indicating the possible presence of wetlands. The presence of wetlands as indicated is not intended to imply exact location or specific jurisdictional status or regulatory authority. Likewise, the absence of wetland on this map does not necessarily indicate that wetland is not present, but rather that the presence of wetland was found not likely during this inventory. Therefore, each site should be evaluated on a site specific basis. A permit is required from the Michigan Department of Environmental Quality and the Township to conduct certain activities in a regulated wetland. Bloomfield Township assumes no responsibility for errors that arise from the use of this data.



NISWANDER ENVIRONMENTAL, L.L.C.

10524 E Grand River Ave., Suite 103
Brighton, MI 48116
810.225.0539 Fax: 810.225.0553